



Sinfonia

The Newsletter of the *Chamber Orchestra of New York*

Winter 2010

Volume II, Number 2

**Chamber Orchestra of NY
Presents 2009-2010 Season**

**SATURDAY, MAY 22, 2010
AT 8:00PM**



ITALIAN HEARTSTRINGS

Alessandro Scarlatti, **Il Giardino di Rose**
Respighi, **Aria (U.S. Premiere)**
Di Vittorio, Selections from **Sinfonia No.1**
Puccini, **Crisantemi**
Respighi, **Suite for Strings (U.S. Premiere)**

The Chamber Orchestra of New York, Salvatore Di Vittorio, Music Director, has announced details of its 2009-2010 season.

After meetings in 2007, Mr. Pedarra entrusted Maestro Di Vittorio with copies of unpublished Respighi manuscripts, in anticipation of their possible public premieres.

This third season has been created in collaboration with Elsa and Gloria Pizzoli (the great nieces and family heirs of Ottorino Respighi) and Potito Pedarra (the Respighi archive curator).

During this time, Maestro Di Vittorio shared with Mr. Pedarra the idea of composing an

**SATURDAY, FEBRUARY 13, 2010
AT 8:00PM**

ALLA RESPIGHIANA
Announcing **The Respighi Prize**"

Respighi-Di Vittorio - **Overtura
Respighiana (World Premiere)**
Rossini-Respighi - **Rossiniana Suite**
Di Vittorio - **Sinfonia No. 2 (U.S.
Premiere)**
Respighi (completed by Di Vittorio) –
Concerto per Violino (World Premiere)
Laura Marzadori, violin



Overture in homage to Respighi, and as a thank you to the Respighi heirs for their permission for the Chamber Orchestra to honor the composer's name and to promote his unpublished music.

After acknowledging Di Vittorio's inherent musical connection with Respighi, Mr. Pedarra (in agreement with the Pizzolis) invited the Maestro to complete Respighi's first (unfinished) **Concerto per Violino**.





Initial plans for the homage Overture evolved from a reworking of Respighi's transcriptions of Rossini's music (**Rossiniana Suite** and **La Boutique**

Fantasque) to realizing a musical connection with Di Vittorio's own composition **Sinfonia No. 2**. Maestro Di Vittorio observed: "I noticed a strong resemblance between my nursery rhyme motif in the final movement of **Sinfonia No. 2** and what I consider Respighi's children's theme at the beginning of Pines of Rome. If I could achieve a connection in the Overture, both works could be performed in the same program." The Maestro envisioned a performance of the Overture alongside **Sinfonia No. 2**, after receiving an invitation to perform his revised Sinfonia in Palermo.

As the homage, now titled **Overtura Respighiana**, developed, Mr. Pedarra grew more convinced that a season combining the music of Respighi and his related works on Rossini, alongside Di Vittorio's work on Respighi could realize "...a real fusion between the music of Respighi and our maestro (Di Vittorio)."

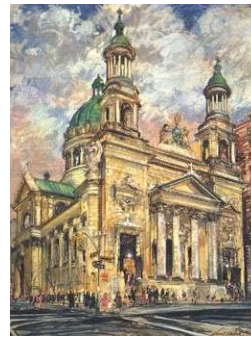


Di Vittorio's Overture and Respighi's **Violin Concerto** have clear musical links that connect them to each other as well as to Respighi's famous work, **Pines of Rome**. Likewise there is an obvious symbiosis between Di Vittorio's **Overtura Respighiana** and **Sinfonia No. 2**. All these works (including **Rossiniana Suite**) and two Respighi rarities - the **Aria**, the **Suite for Strings** and Respighi's

Concerto per Violino are now part of the Third Season of the Chamber Orchestra to be recorded on the Naxos label.

At the Season opening winter concert "**Alla Respighiana**", Maestro Di Vittorio and the Chamber Orchestra will announce **The Respighi Prize** competition for young composers and soloists, with a pre-concert presentation honoring the Respighi heirs and archive affiliates at the Italian Cultural Institute.

We will conclude our Season with a spring concert "Italian Heartstrings", including such works as Scarlatti's **Il Giardino di Rose** (in commemoration of the Scarlatti anniversary) and Puccini's **Crisantemi** for strings (from the opera Manon Lescaut).



Both concerts are scheduled for the magnificent Church of St. Jean Baptiste, Lexington Avenue at 76th Street in Manhattan.

A very exciting season indeed!

For more about the season, The Respighi Prize and ticket information, visit <http://www.chamberorchestraofnewyork.org/season.html>.

On the Web and On the Phone

For more information about the Chamber Orchestra of NY, including how you can support the orchestra with your tax-deductible gift, contact us at 646-642-8441, info@chamberorchestraofnewyork.org or <http://www.chamberorchestraofnewyork.org>.